

General ordering data

Type	Terminal block RSA PE 2,5 A
Order number	A521230
EAN	8595155003232
Barva	green-yellow
Package (small) [pcs]	20 pcs in a box

Technical data
Electrical parameters

Nominal current [A] CE	-
Nominal current [A] Ex	-
Short-time current [A]	300
Nominal insulation voltage [V] CE	-
Nominal insulation voltage [V] Ex	-
Nominal working voltage Ue [V]	-
Nominal impulse withstand voltage Uimp [V]	4000

Conductor connection

Nominal cross section input / output [mm ²]	1 / 1
Range of conductors, input / output [mm ²]	0,5 ÷ 2,5
Conductor cross section solid [mm ²]	0,5 ÷ 2,5
Conductor cross section flexible [mm ²]	0,5 ÷ 2,5
2 conductors cross section solid [mm ²]	-
2 conductors cross section flexible [mm ²]	-
3 conductors cross section solid [mm ²]	-
3 conductors cross section flexible [mm ²]	-
Stripping length input / output [mm]	7
Number of clamping units	2
Number of poles / number of floors [pcs]	1 / 1

Mechanical parameters

Torque [Nm]	0,4
Tool	Screwdriver/ PH0 / 0,5 x 3
Mounting	TH 35

Operating parameters

Pollution degree	2
IP	-
Operating temperature [°C]	-40 ÷ +105
The need for an end plate	no

Approvals

Norm	CE: IEC 60947-7-2; Ex: IEC 60079-7
------	------------------------------------

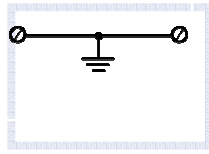
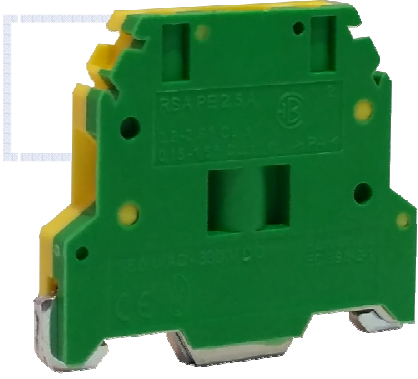
ATEX approvals

-

Dimensions and weight

Height [mm]	7,0
Length [mm]	40,5
Weight / NET [g]	48,0
Weight / NET [g]	20

Other information



ELEKTRO, výrobní družstvo v Bečově nad Teplou

Tovární 128, 364 64 Bečově nad Teplou

IČ: 000 28 886

DIČ: CZ 000 28 886

25.06.2024

